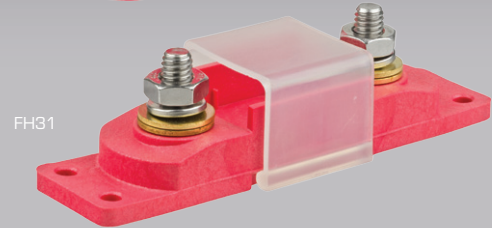


## Circuit Protection

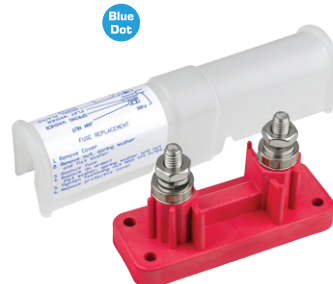
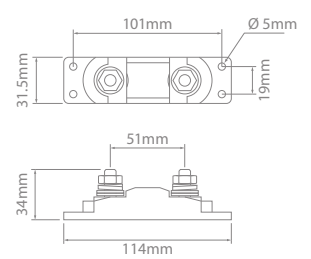
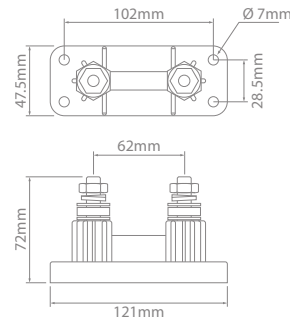
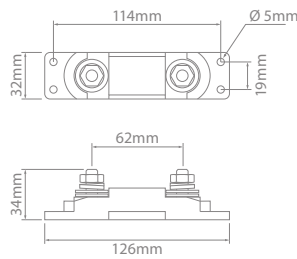
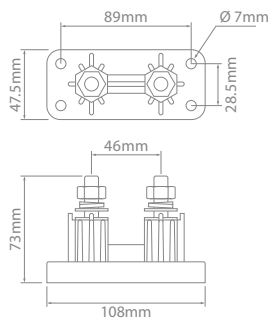
Bolt-in Fuse Holders

- Stainless steel hardware. Brass washers on FH31 & FH33.
- Models suiting ANL, AMG and T-Class fuses.
- FH31 & FH32 includes protective cover.
- FH32 features Blue Dot enhanced conductivity componentry.



Post :  
Base :

Stainless Steel  
Glass-Filled Nylon



### Blue Dot – Enhanced Performance



Certain components feature brass or plated brass material and are marked with a blue mark. These components pass current more efficiently than steel. Ensure blue dot components are kept in their correct conductive location (factory location). Failure to do so can result in degraded performance and premature device failure.



### Bolt-In Fuse Holders

Part No.	Fuse Type	Maximum Voltage	Post	Current Rating @ 12V
FH30	T-Class	48	3/8"	Up to 400A
FH31	ANL	48	5/16"	Up to 300A
FH32	ANL (Ceramic only)	32	3/8"	Up to 750A
FH33	AMG	32	5/16"	Up to 250A

