
Miscellaneous



Miscellanies



DIN/Cigar Connectors **110**



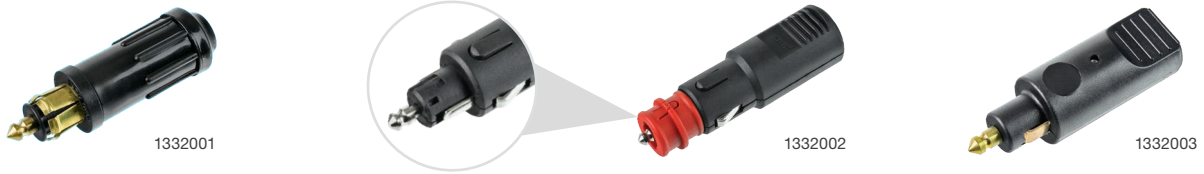
Multi Pin Connectors **114**

Miscellanies

DIN/Cigar Connectors



- DIN and universal cigar size available.
- Brass contacts for greater conductivity.
- 1332002 incorporates strain relief.
- 1332002 removable cap allows both DIN and cigar connections.



DIN/Cigar Plugs

Part No.	Current Rating (A)	Type	Housing	Notes
1332001	12	DIN	Thermoplastic	
1332002	12	Cigar/DIN	Thermoplastic	Incorporates strain relief
1332003	8	DIN	Thermoplastic	



Plug & Socket

Part No.	Description	Voltage	Current Rating (A)
1336010	2 Pin. Stainless Steel	12 – 24	20



DIN/Cigar Sockets

Part No.	Current Rating (A)	Type	Voltage	Cap Style	Terminal Style	Housing	Mounting Ø (mm)
1331001	12	DIN	—	Spring Loaded	Parallel	Brass	18
1331002	12	DIN	—	—	Parallel	Brass	18
1331003	12	DIN	—	Press Fit	Parallel	Brass	18
1331004	12	DIN	—	Spring Loaded	Offset	Brass	18
1331011	12	DIN	—	—	Parallel	Thermoplastic	18
1331005	12	DIN	—	—	Screw	Aluminium	—
1331006	16 total	DIN	—	—	Parallel	Thermoplastic	—
1331007	16	DIN	—	—	Parallel	Thermoplastic	—
1331008	15	Cigar	—	Press Fit	Offset	Stainless Steel	28
1331009	—	Cigar	12	—	Offset	Stainless Steel	28
1331010	20	Cigar	—	Press Fit	Offset	Stainless Steel	28

Miscellanies



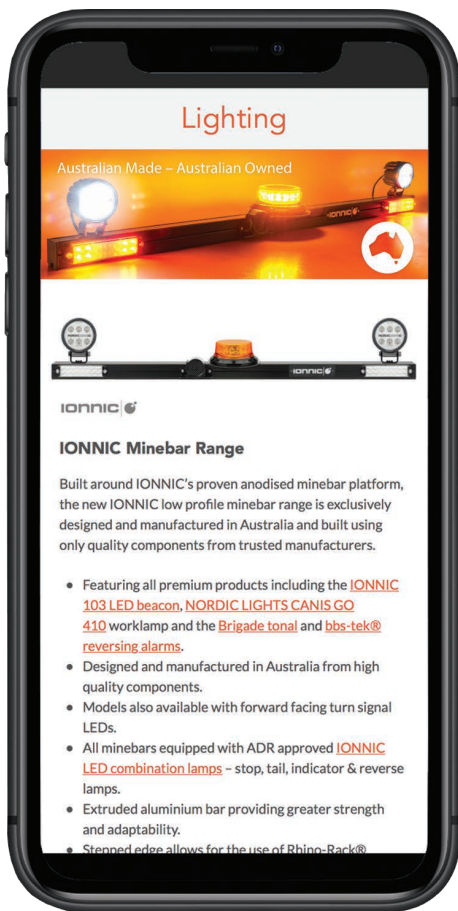
Sockets & Mounts

Part No.	Description	Voltage	Output
1336000	Volt Meter. Displays 6–29.9V	12–24	—
1336001	Socket – Power (cigar)	12–24	16A
1336002	Socket – Engel	12–24	15A
1336003	Socket – 5V Twin USB	12–24	2 x 2.1A
1336005 NEW	Socket – USB Type C & USB Type A	12–24	2 x 1.5A
1336M01	Surface Mount – Single		
1336M02	Surface Mount – Double		
1336M03	Surface Mount – Triple		
1336M05	Panel Mount – Double		
1336M06	Panel Mount – Single		

- SB50-FM-1ACC** NEW Flange mount bracket, 1 x 30mm accessory cutout. Suits 50A High Current Connectors
- SB50-FM-2ACC** NEW Flange mount bracket, 2 x 30mm accessory cutouts. Suits 50A High Current Connectors

Newsletter

Receive the latest ionnic news and updates via email, sign up
ionnic.com/product-updates.html



ionnic.com

ionnic |  Product Update Newsletter
February 2024
Lighting | Safety | Electrical

Lighting



Worklamps 2024

This new catalogue is now available to download from our website or you can request a printed copy from your local sales representative.

Included in this catalogue:

- Nordic Heavy Duty LED.
- Nordic General Purpose LED.
- Nordic Heavy Duty HID.
- J.W. Speaker LED.
- IONNIC LED Worklamps.
- IONNIC LED Driving Lights.
- LED Interior Lighting.

[Download the PDF](#)

Introducing

IONNIC | Series 82 LED Worklamps



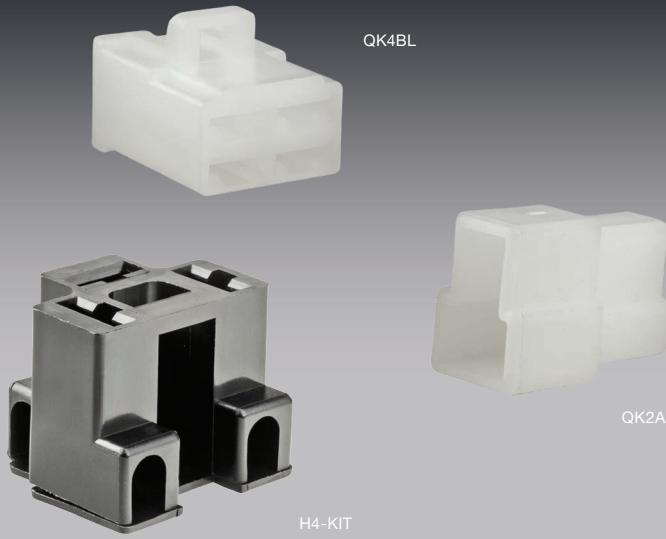
IONNIC Series 82 Worklamps

The Series 82 are equipped with high-output 5W Osram® LEDs, ensuring exceptional brightness and longevity, and constructed with a sturdy cast alloy body with stainless steel hardware, these worklamps are built to withstand even the toughest conditions.



Miscellanies

Multi Pin Connectors



- All connectors are polarised (keyed) to prevent mismatching.
- QL connectors feature a positive locking latch which automatically engages on mating.
- QK connectors feature panel mounting tabs.
- Ideal for low voltage power supply needs.
- Universal EFI connector kit.



QL Series Kits – Kits

Cavities	1	2	Kit contents
Part No.	QL1	QL2	1 x Receptacle 1 x Plug Tabs and receptacles according to cavities



QL Series – Connectors – 8mm

	1 Cavity	2 Cavities
Mating Latch	Yes	Yes
Receptacles	QL1A/10	QL2A/10
Plugs	QL1B/10	QL2B/10

Supplied in packs of 10.



QL Series – Contacts – 8mm

Pack Qty – 100	Blade Size (mm)	Type	Wire Size (mm ²)
66047BL2/100	8	Receptacle	3.0 – 5.0
66057BL2/100	8	Tab	3.0 – 5.0



QK Series Kits – Kits

Cavities	1	2	3	4	6	8	Kit contents 1 x Receptacle 1 x Plug Tabs and receptacles according to cavities
Part No.	QK1	QK2	QK3	QK4	QK6	QK8	



QK1ASL



QK1B



QK1BA



QK2A



QK3BL



QK6AL



QK8BLT

QK Series – Connectors – 6.3mm

Mating Latch	1 Cavity		2 Cavities		3 Cavities	4 Cavities	6 Cavities	8 Cavities
	Yes	No	Yes	No	Yes	Yes	Yes	Yes
Receptacles	QK1ASL/10	QK1A/10 QK1AA/10	QK2ASL/10 QK2A/10	QK3AL/10	QK4AL/10	QK6AL/10	QK8AL/10	
Plugs	QK1BSL/10*	QK1B/10 QK1BA/10	QK2BSL/10 QK2B/10	QK3BL/10	QK4BL/10	QK6BLT/10	QK8BLT/10	

Supplied in packs of 10.

* QK1BSL/10 housing requires 605001BL2 receptacle.



604501BL2



604502BL2



605001BL2



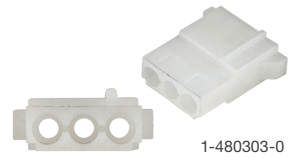
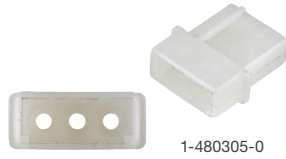
605501BL2, 605502BL2

QK Series – Contacts – 6.3mm

Pack Qty – 100	Blade Size (mm)	Type	Wire Size (mm ²)	Locking Tab
604501BL2/100	6.3	Receptacle	2.0 – 3.0	Yes
604502BL2/100	6.3	Receptacle	1.0 – 2.0	Yes
605001BL2/100	6.3	Receptacle	1.0 – 1.5	Yes
605501BL2/100	6.3	Tab	2.0 – 3.0	Yes
605502BL2/100	6.3	Tab	1.5 – 2.0	Yes



Miscellanies



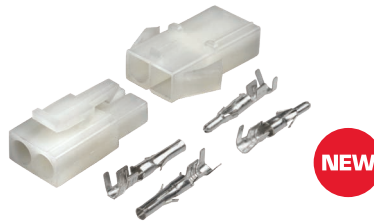
TE MATE-N-LOK – Connectors

Part No.	Type	Cavities
1-480305-0	Receptacle	3
1-480303-0	Plug	3



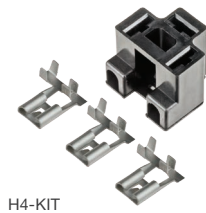
TE MATE-N-LOK – Contacts

Pack Qty – 10	Type	Wire Size (mm ²)
163304-2/10	Socket	0.5 – 1.0
163305-2/10	Pin	0.5 – 1.0



6007 Series Kit NEW

Part No.	Description	Current Rating (A)	Wire Size (mm ²)	Cable O.D. Range (mm)	Kit Contents
6007-2	2 circuit kit featuring locking latch. Rated up to 300V AC/DC, 1,500V AV/minute	15	0.2 – 2.0	2.0	1 x Plug 1 x Receptacle 2 x Pins 2 x Sockets



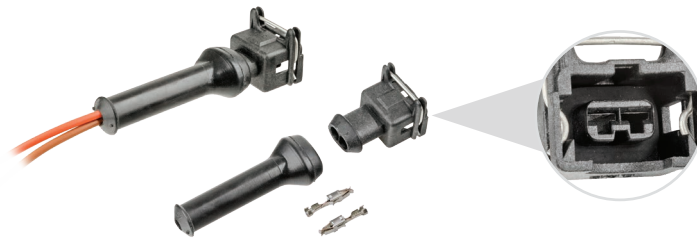
H4 Sealed Beam Connectors

Part No.	Description	Wire Size (mm ²)
H4-KIT	Kit contains 1 x Connector, 3 x 8mm Flag Contacts – Tin-plated	2.1
3029	Pre-wired. Bronze contacts. 200mm wire length	



Temperature Sender Kit

Pack Qty - 10	Description	Blade Size (mm)	Wire Size (mm ²)
TSKIT/10	Kit contains 1 x Connector, 1 x 6.3mm Contact	6.3	0.8 - 1.5

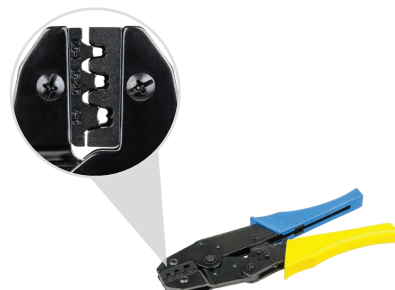


EFI Connector Kit

Part No.	Description	Kit Contents
EFI-2-QR	Quick release connector kit suiting injectors & vehicle sensors	1 x Connector housing 1 x Rubber Extension 2 x Sockets (925590-2)



HT-4220



HT-4560

Multi Pin Connectors – Crimpers

Part No.	Description	Crimp Range (mm ²)
HT-4220	—	0.2–0.3, 0.3–0.5, 0.5–0.8, 0.8–1.3, 1.3–2.0
HT-4560	Ratcheting	0.5–1, 1.5–2.5, 4–6

