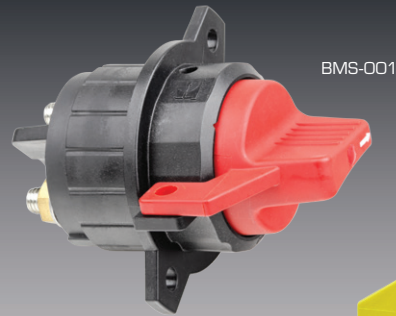


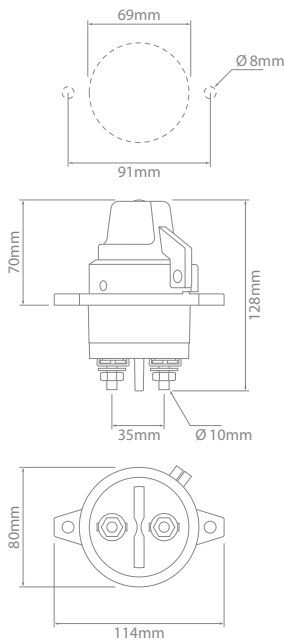
BMS - Manual Switching

- Integral lockout – requires no lockout bracket.
- Environmentally sealed – IP67.
- Minimise battery drain.
- Red/yellow rotary knob.
- Withstands exposure to shock, vibration, salt spray & chemical splash.



Fixed Handle

Voltage : 6–36V
Studs : Tin plated Copper
Housing : Glass Filled Nylon
Ingress Protection : IP67
Operating Temperature : -40°C to 85°C



Fixed Handle – Polymer

Part No.	Description	Main Contacts (A)	
		Intermittent	Continuous
BMS-001	Single Pole – Red handle	2000	250
BMS-002	Single Pole – Yellow handle	2000	250

