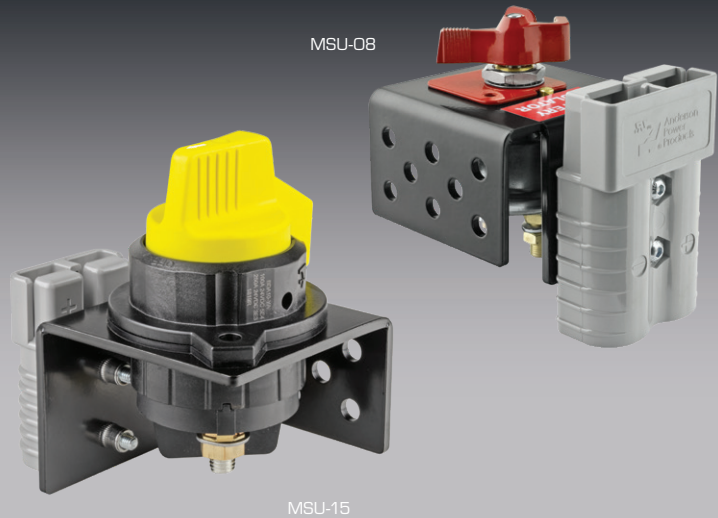


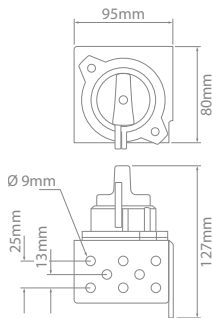
BMS - Kits

- Now available with BMS-001/BMS-002.
- BMS-17 features auxiliary contacts.
- Manufactured in Australia.
- Compact size.
- Suitable for use on any vehicle.
- Kits to suit battery or starter isolation.
- Available with either a 175A or 350A 'Jump Start Receptacle'.
- Powder coated brackets.



Universal Lockout Kits

Bracket : Powder Coated Aluminium



STARTER
ISOLATOR
OR
BATTERY
ISOLATOR



BMS-001



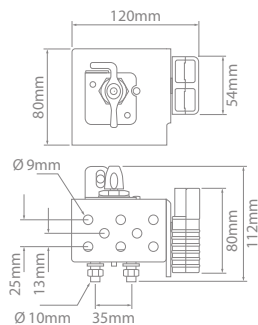
BMS-002

Universal Lockout Kits – BMS-001/BMS-002

Part No.	Label
MSS-14 <small>NEW</small>	"BATTERY ISOLATOR"
MSS-15 <small>NEW</small>	"STARTER ISOLATOR"

Kits Contain:
 1 x Universal mounting bracket
 1 x Single pole fixed handle battery master switch **BMS-001** or **BMS-002**
 1 x Label "BATTERY ISOLATOR" or "STARTER ISOLATOR"
 1 x Gasket

Supplied in component form.



STARTER
ISOLATOR
OR
BATTERY
ISOLATOR



BMS-17



Universal Lockout Kits – 175A Jump Start – BMS-17

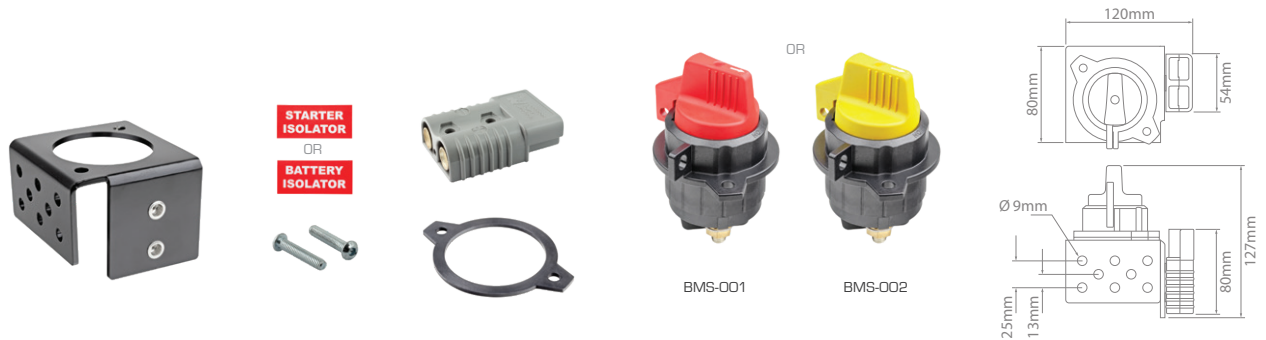
Part No.	Label
MSU-04	"BATTERY ISOLATOR"
MSU-05	"STARTER ISOLATOR"

Kits Contain:
 1 x Universal mounting bracket
 1 x 350A High current connector
 1 x Single Pole fixed handle battery master switch BMS-17
 1 x Two piece metal lockout bracket **Red** or **Yellow**
 1 x Label "BATTERY ISOLATOR" or "STARTER ISOLATOR"
 2 x 30mm button-head M6 bolt

Supplied in component form.



BMS - Kits



Universal Lockout Kits – 175A Jump Start – BMS-001/BMS-002

Part No.

MSU-14 NEW

Label "BATTERY ISOLATOR"

MSU-15 NEW

"STARTER ISOLATOR"

Supplied in component form.

Kits Contain:

- 1 x Universal mounting bracket
- 1 x 175A High current connector
- 1 x Single pole fixed handle battery master switch **BMS-001** or **BMS-002**
- 1 x Label "BATTERY ISOLATOR" or "STARTER ISOLATOR"
- 2 x 30mm button-head M6 bolt
- 1 x Gasket



Universal Lockout Kits – 350A Jump Start – BMS-17

Part No.

MSU-08

Label "BATTERY ISOLATOR"

MSU-09

"STARTER ISOLATOR"

Supplied in component form.

Kits Contain:

- 1 x Universal mounting bracket
- 1 x 350A High current connector
- 1 x Single Pole fixed handle battery master switch BMS-17
- 1 x Two piece metal lockout bracket **Red** or **Yellow**
- 1 x Label "BATTERY ISOLATOR" or "STARTER ISOLATOR"
- 2 x 40mm button-head M6 bolt



Universal Lockout Kits – 350A Jump Start – BMS-001/BMS-002

Part No.

MSU-18 NEW

Label "BATTERY ISOLATOR"

MSU-19 NEW

"STARTER ISOLATOR"

Supplied in component form.

Kits Contain:

- 1 x Universal mounting bracket
- 1 x 350A High current connector
- 1 x Single pole fixed handle battery master switch **BMS-001** or **BMS-002**
- 1 x Label "BATTERY ISOLATOR" or "STARTER ISOLATOR"
- 2 x 40mm button-head M6 bolt
- 1 x Gasket

