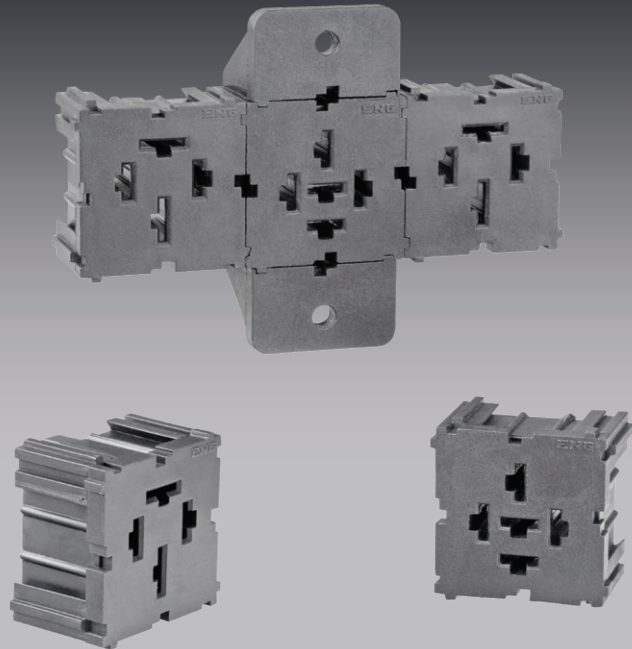


Relays & Solenoids

- Modular design allows unlimited configurations to suit your own needs.
- 3 mounting bracket options.
- Suits Mini and High Current Mini relays.

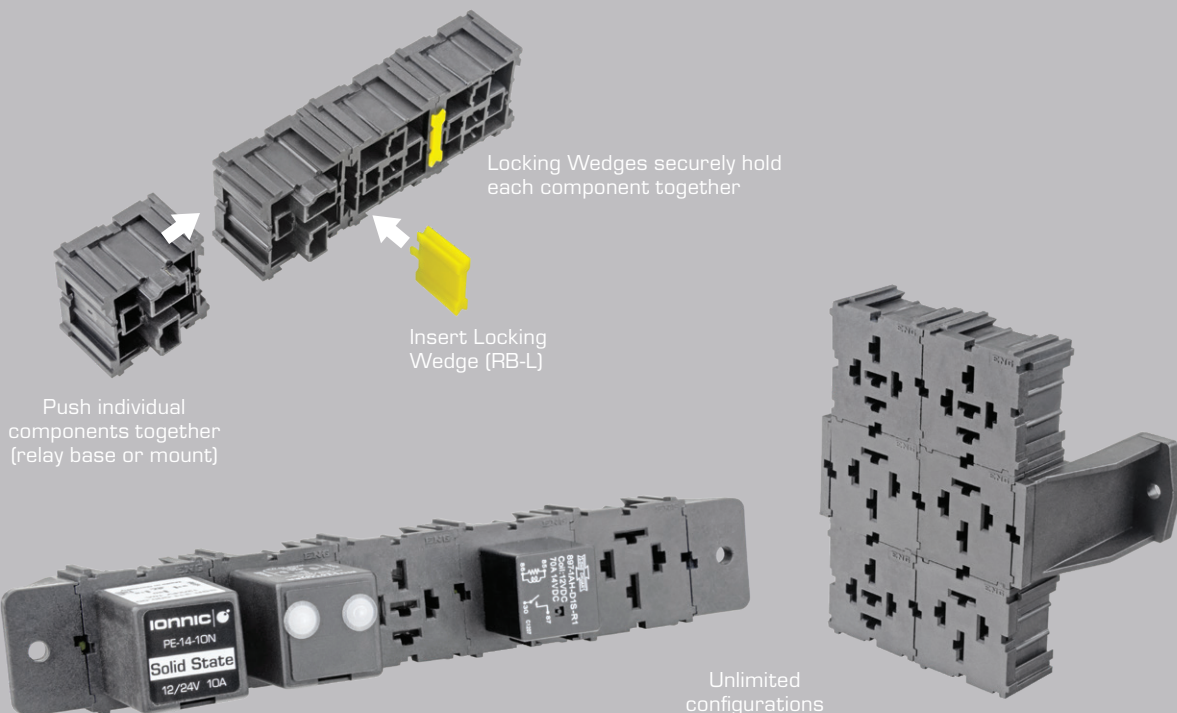


Modular Relay Base

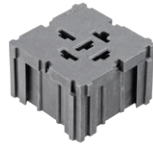
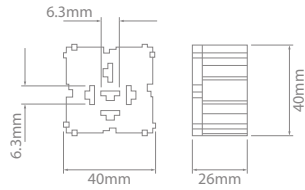
Material : Thermoplastic
Operating Temperature : -40°C to 85°C

Modular Design

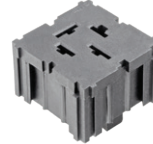
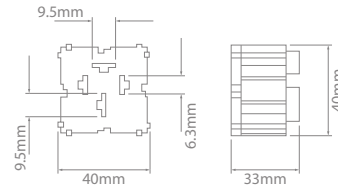
The modular design allows the user to construct a relay configuration to suit their own needs. Easy to use Locking Wedges securely connect each component together.



Relays & Solenoids



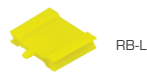
RB-01



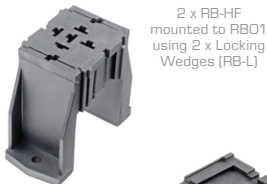
RB-02

Modular Relay Base

Part No.	Suits	Terminal Size (mm)
RB-01	Mini Relays	6.3
RB-02	High Current Mini Relays	6.3 & 9.5



RB-L



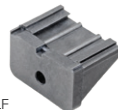
2 x RB-HF mounted to RB01 using 2 x Locking Wedges (RB-L)



RB-HF



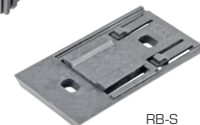
2 x RB-LF mounted to RB02 using 2 x Locking Wedges (RB-L)



RB-LF



RB-S mounted to RB02



RB-S



42282-2/100



281197-2/100

Modular Relay Base – Accessories

Part No.	Description
RB-L	Locking Wedge
RB-HF	Mounting Bracket – Surface – High Profile. 5mm mounting hole
RB-LF	Mounting Bracket – Through Panel – Low Profile. 5mm mounting hole
RB-S	Mounting Bracket – Side – Surface. 5mm mounting hole
42282-2/100	AMP™ Terminal – 6.3mm. Cable Size – 1–1.25mm ² . Pack of 100.
280756-4/100	AMP™ Terminal – 9.5mm. Cable Size – 1–1.25mm ² . Pack of 100.