

IONNIC Slimline Lightbars



ionnic | 

Lighting | Safety | Electrical

For details of your nearest reseller free call : 1800 724 690 | www.ionnic.com

IONNIC Slimline



- Exceptional light output – REG65 and ECE R10 certified for EMC compliance.
- Extreme slimline design – 33.5mm high.
- Available in 3 lengths 1238mm, 1544mm and 1850mm.
- Environmentally sealed – IP67.
- Each LED module incorporates a gore filter for ingress prevention.
- Mounting channel runs entire length of bar.
- Supplied with optional mounting brackets.
- Multi-voltage.
- 3 Year Warranty



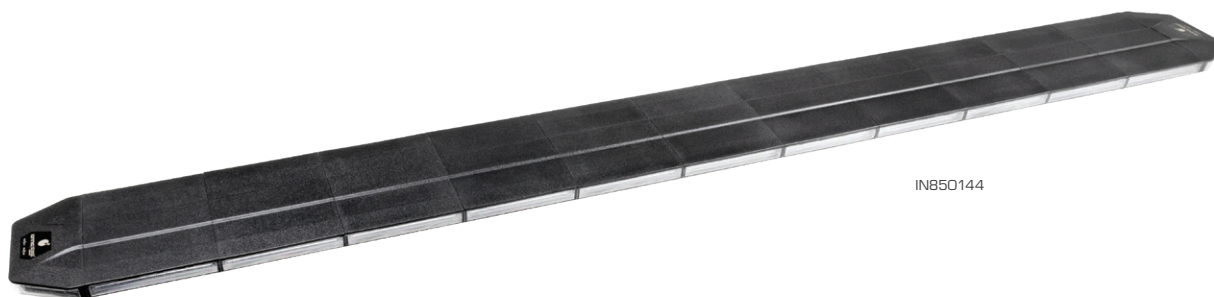
Operational Voltage : 12–24V
 Flash Patterns : 11
 Lens : Polycarbonate
 Housing/Base : Polycarbonate, Aluminium
 Harness Length : 4m
 Light Source : HL LEDs
 Ingress Protection : IP67
 Approvals : ECE R65, ECE R10
 Operating Temperature : -40°C to 65°C



IN850142



Supplied with brackets and mounting hardware



IN850144

IONNIC Slimline LED Lightbars

Amber	Length	Light Source	Output		Current Draw	Weight
			Theoretical	Actual		
IN850142	1238mm	20 x LED Modules	100W	92–110W	8.0A @ 13.8V	9.6kg
IN850143	1544mm	24 x LED Modules	110W	98–120W	10.1A @ 13.8V	11.2kg
IN850144	1850mm	28 x LED Modules	144W	129–158W	11.5A @ 13.8V	12.8kg

Supplied with mounting hardware.