
IMH





Ultraview Touch Series **32**



Smart Touch Panels **38**



Legend Series Keypads **40**



Smart Touch Rocker Switches **42**

610-00060-110

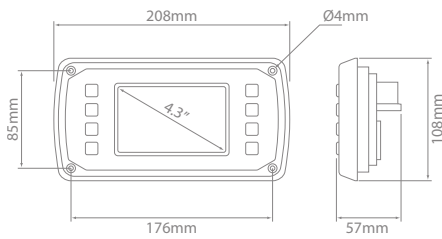


610-00060-120

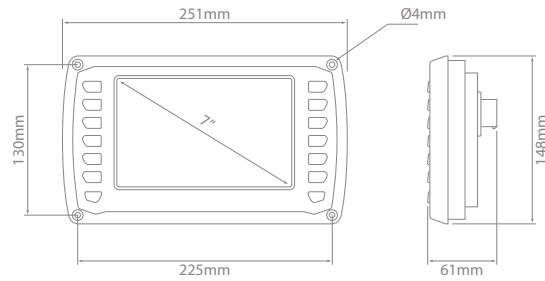
6V 36V IP67 Made in North America

- Projected capacitive touch screen on all models – can be used while wearing gloves.
- J1939 CAN based information display incorporating programmable switching.
- Infinitely customisable.
- 2 x configurable CAN ports.
- Bonded LCD screen viewable in direct sunlight and whilst wearing polarised lenses.
- Reverse polarity and EMF protected.
- Horizontal or vertical screen orientation.
- Environmentally sealed – IP67.
- Models with tactile buttons.
- Multi-voltage.
- Made in North America.

Voltage : 6–36V
Video Input : NTSC/PAL
Output : Digital 500mA
CAN : SAE J1939, NMEA 2000
Construction : Polycarbonate
Ingress Protection : IP67
Vibration : 7.86G rms 5–2000 Hz, 3 axis
Shock : +/- 50G, 3 axis
Operating Temperature : -40°C to 85°C



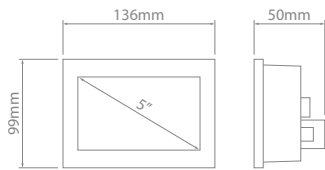
2045-052-00-CL1
"UV450"



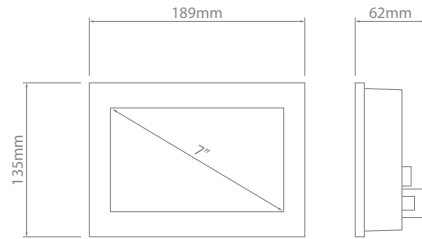
2070-053-00-CL1
"UV700"

Ultraview Touch Series – Tactile

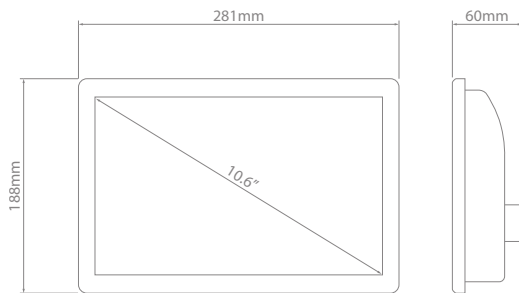
Part No.	Description	Screen Size	Resolution	Configurable Inputs	Video Inputs	Outputs	Current Draw (mA)	
							@ 14.4V	@ 28.8V
2045-052-00-CL1	UV450	4.3"	480 x 272	1	2	1	100	100
2070-053-00-CL1	UV700	7"	800 x 480	3	3	1	600	300



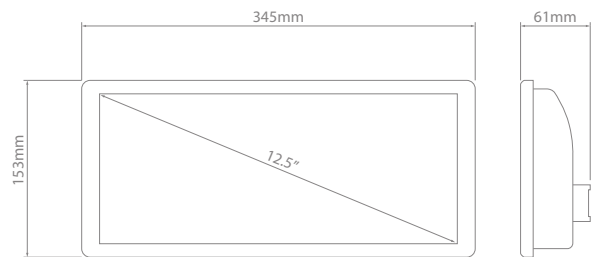
610-00060-050
"UV500"



610-00060-080
"UV800"



610-00060-110
"UV1100"



610-00060-120
"UV1200"

Ultraview Touch Series

Part No.	Description	Screen Size	Resolution	Configurable Inputs	Video Inputs	Outputs	Current Draw (mA)	
							@ 14.4V	@ 28.8V
610-00060-050	UV500	5"	800 x 480	1	2	1	400	300
610-00060-080	UV800	7"	800 x 480	8	3	2	900	600
610-00060-110	UV1100	10.6"	1280 x 480	8	3	2	1200	700
610-00060-120	UV1200	12.3"	1280 x 768	8	3	2	1300	800





CONNKIT-UV450-VIDEO 122883 122829 122370 122965 AC-019






RAM-B-138U RAM-B-138U-C 2070-3.75MOUNT 2070-6MOUNT 122448



122387 122386 122451 122450


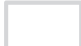

Ultraview Touch Series – Accessories – UV450, UV500 & UV700

Part No.	Description	 UV450	 UV500	 UV700
CONNKIT-UV450-VIDEO	Pre-terminated connector – CCTV	•	–	–
122883	Pre-terminated connector – CAN & Power	–	–	•
122829	Pre-terminated connector – 3x RCA	–	–	•
122370	Programming cable	•	–	•
122965	Programming cable*	–	–	•
AC-019	Adaptor – Connect Backeye Elite cable to RCA connector	•	–	•
RAM-B-138U	Mounting bracket – Adjustable pedestal – 80mm	•	•	–
RAM-B-138U-C	Mounting bracket – Adjustable pedestal – 150mm	•	•	–
2070-3.75MOUNT	Mounting bracket kit – Adjustable pedestal – 80mm	–	–	•
2070-6MOUNT	Mounting bracket kit – Adjustable pedestal – 150mm	–	–	•
122448	Mounting bracket	–	–	•
122387	Bezel	•	–	–
122386	Bezel	–	–	•
122451	Decal	•	–	–
122450	Decal	–	–	•

* UV700 requires both 122370 and 122965 cables for programming.









Ultraview Touch Series – Accessories – UV800, UV1100 & UV1200

Part No.	Description			
		UV800	UV1100	UV1200
122883	Pre-terminated connector – CAN & Power	•	•	•
122829	Pre-terminated connector – 3x RCA	—	•	•
513-00144-001	Pre-terminated connector – 1x RCA	•	—	—
513-00144-005	Pre-terminated connector – 5x RCA	•	—	—
RAM-B-138U	Mounting bracket – Adjustable pedestal – 80mm	•	—	—
RAM-B-138U-C	Mounting bracket – Adjustable pedestal – 150mm	•	—	—
629-00071	Mounting bracket – Panel mount	—	•	—
610-00061-080	Bezel with tactile buttons	•	—	—
M12-CAP	Screw on cap for M12 male connector. 130mm length	•	•	•



Ultraview Touch Series – Connection Kits

Part No.						
	UV450	UV500	UV700	UV800	UV1100	UV1200
CONNKIT-UV450	•	•	—	—	—	—
CONNKIT-UV700	—	—	•	—	—	•
CONNKIT-UV800	—	—	—	•	—	—
CONNKIT-UV1100	—	—	—	—	•	—

Crimping tools can be found on page 117.
 Supplied with bolts/nuts and washers.



Ultraview Interface Design & Customisation



Smart Touch Panels found on page 38.

The Ultraview Touch interface can be infinitely customised to display and interact with the user, either through physical buttons, via touch screen or both.

If a design can be imagined, then it can be created using the Class1 Digital Truck Designer (DTD) software environment. For more detail see page 21.

Once all operational requirements are determined, an interface is designed and programmed specifically for the application. All graphical elements including, colours, backgrounds, dials, gauges etc can be enhanced with real time animation.

A range of standard templates are available for less complex interface requirements.

Touch Interface

Touch Screen

Directly touching an icon or image on a screen is a popular and intuitive way to interact with a device.

Not being restricted by physical switches allows for a greater variety of actions and increased operational efficiency.

Combination

Some operators prefer physical buttons, others instinctively touch the screen.

The Ultraview series allows for both to be used, providing system designers and operators the flexibility to perform tasks in a manner best suiting their preference.



Tactile Push Buttons

Backlit push buttons are able to be configured to operate with all Ultraview displays. The switches are designed to provide positive tactile confirmation when pressed, even when wearing gloves, giving the operator confidence when actuating a switch function.

Personalisation



Splash/Intro

An initial screen shown during the power up of the Ultraview display can be customised with manufacturer/customer logo, graphic or message.

Display Video



Video

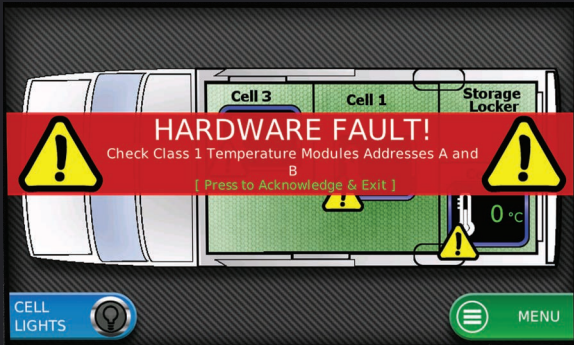
Ultraview screens can display video from either PAL or NTSC cameras. The image can be configured to the full height of the display or resized to be viewed in conjunction with other on-screen elements.

Warnings

There are several methods available to draw an operator's attention to a specific area of the Ultraview interface. The most popular are shown below.

Banner

Typically a partial overlay on the active screen, displayed briefly or until acknowledged when a trigger is activated or a parameter is out of range.



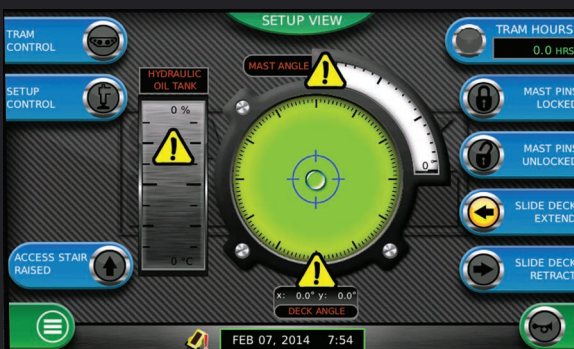
Highlights

Colour changes or simulated illumination can indicate an active function, an open door or locker, or a switched-on work lamp.



Icons

Used in a similar way to a warning lamp or status notification, icons can show if an item is activated or if a component is out of operating range.



Combination

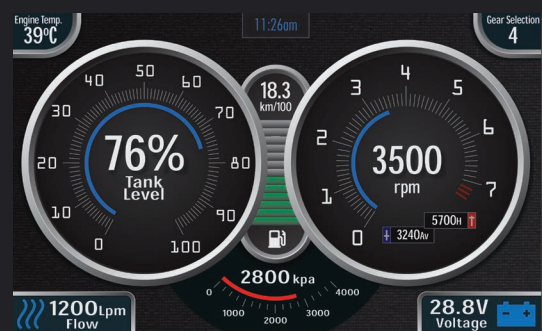
A combination of these events may be used to illicit action by the operator. The Ultraview Series also provides an output for an audible alarm if required.

Gauges

Traditionally machine operations are represented through analogue instruments and devices, the most effective of these have been programmed to display virtually on screen in the Ultraview series.

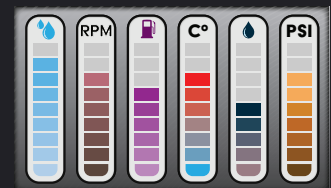
Rotary

The most common gauges viewed in equipment today. Typically a round fascia with a coloured needle to indicate the level reached by the sensor/pickup. The flexibility of the Ultraview rotary gauge is the ability to design it to whatever size, shape, colour etc the user desires.



Bar

A column of colour moving on a scale to indicate the feedback from a sensor or pickup. Orientation, colour, and triggered effects can be applied to this gauge to bring this component to life. Curving a bar graph around a gauge or graphic can add to the visual effect whilst being more space efficient.



Text/Numerical

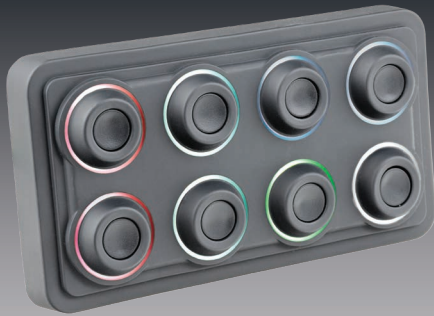
Usually a numerical value that changes based on the feedback from the sensor or pickup. Size, colour, and update rate are configurable to suit operational needs.



Combination

Combining two or more gauges is often the best way to display multiple pieces of related information at a glance. The flexibility of the Ultraview configuration software enables this and many more creative ideas.





610-00061-008



610-00061-004

- 9V 32V
- IP68
- Made in North America

- Preconfigured to suit the Digital Truck Designer (DTD) network.
- Dimmable illumination.
- LED backlit icons.
- Built-in diagnostics.
- Illuminates in a range of colours, user selectable.
- Switch inserts can be laser etched.
- Vertical/horizontal mount.
- Low current draw.
- TE DEUTSCH compatible connector.
- Environmentally sealed – IP68.
- Made in North America.

Operational Voltage : 9–32V
 Max. Current Draw : 65mA @ 13.8V
 CAN : SAE J1939
 Connector : DT Style – 4 Pin on 300mm Fly Lead
 Construction : Silicone
 Ingress Protection : IP68
 Operating Temperature : -40°C to 85°C

Preconfigured for the DTD Network

The Smart Touch Panels have been preconfigured to specifically suit the DTD network.

- Streamline integration
- Reduced install times
- Superior usability
- Refined compatibility and troubleshooting

For detail on DTD, see page 21.



Other products designed to utilise the DTD system include:

- The Ultraview Touch & Monochrome Series
- The Smart Touch Rocker Switches
- System Managers
- I/O Modules
- Power Distribution Modules
- Climate Control Module among others

Speak to an IONNIC technical representative for more detail.



CONNKIT-SMARTTOUCH



101-00296-016

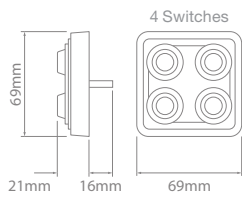
Laser Etched Inserts Available

For further information ask your local reseller or enquire online at ionnic.com



Smart Touch Switch Panels – Accessories

Part No.	Description
CONNKIT-SMARTTOUCH	Connector kit
101-00296-016	Switch Insert. Sold individually



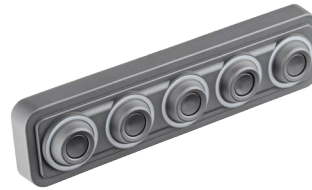
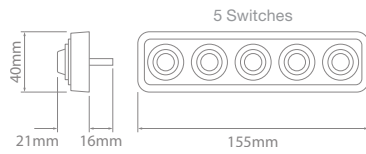
610-00061-004



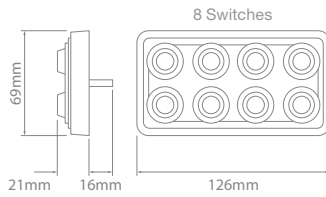
All Smart Touch Panels can be illuminated in a range of colours



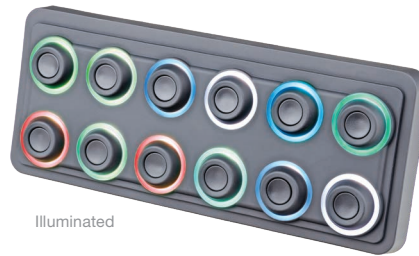
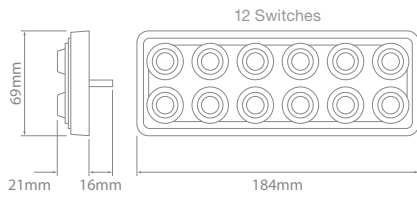
TE DEUTSCH compatible connector on all panels



610-00061-005

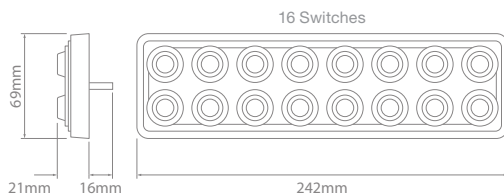


610-00061-008



Illuminated

610-00061-012



610-00061-016

Smart Touch Switch Panels

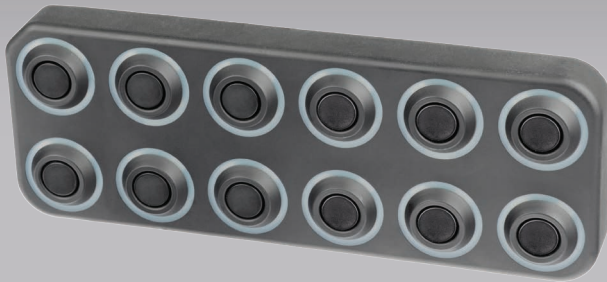
	4 Switches	5 Switches	8 Switches	12 Switches	16 Switches
Part No.	610-00061-004	610-00061-005	610-00061-008	610-00061-012	610-00061-016



NEW



ESW-M505210



ESW-M505230

9V 32V IP67 RoHS Compliant Made in North America

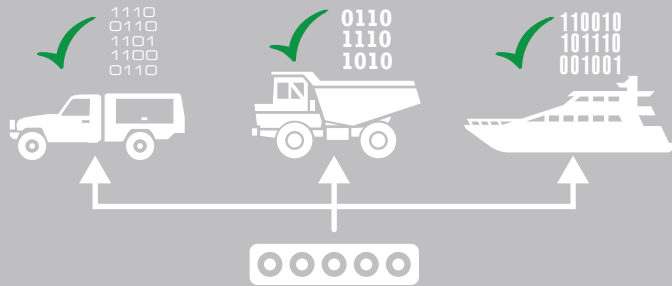
- Flexible CAN integration – configurable to any CANopen, J1939, or NMEA 2000 protocol (multiple baud rate).
- Bluetooth models available – use a smartphone to remotely control each button of the keypad.
- Illuminates in a range of colours, user selectable.
- Dimmable illumination.
- LED backlit icons.
- Switch inserts can be laser etched.
- Vertical/horizontal mount.
- Low current draw.
- TE DEUTSCH compatible connector.
- Environmentally sealed – IP67.
- Made in North America.

Operational Voltage : 9–32V
 Max. Current Draw : 1A @ 12V
 CAN : CANopen, SAE J1939, NMEA 2000
 Baud Rate : 250, 500, 1000 kbps
 Connector : TE DEUTSCH DT Style – 4 Pin
 Construction : PC PBT Alloy Plastic Resin
 Approvals : RoHS
 Ingress Protection : IP67
 Operating Temperature : -40°C to 85°C

CANopen, J1939 & NMEA 2000 Compatible

The Legend Series Keypads feature CANopen, SAE J1939 & NMEA 2000 protocol compatibility, allowing them to be integrated into almost every multiplexed system on the market today.

- Greater flexibility
- Suits most systems on the market today
- Selectable baud rate (communication speed)



Bluetooth Connectivity

The Legend Series Keypads with Bluetooth integration allow users to remotely operate keypad functions via a customised mobile app.

The app emulates physical button presses, providing greater convenience, flexibility, and control.

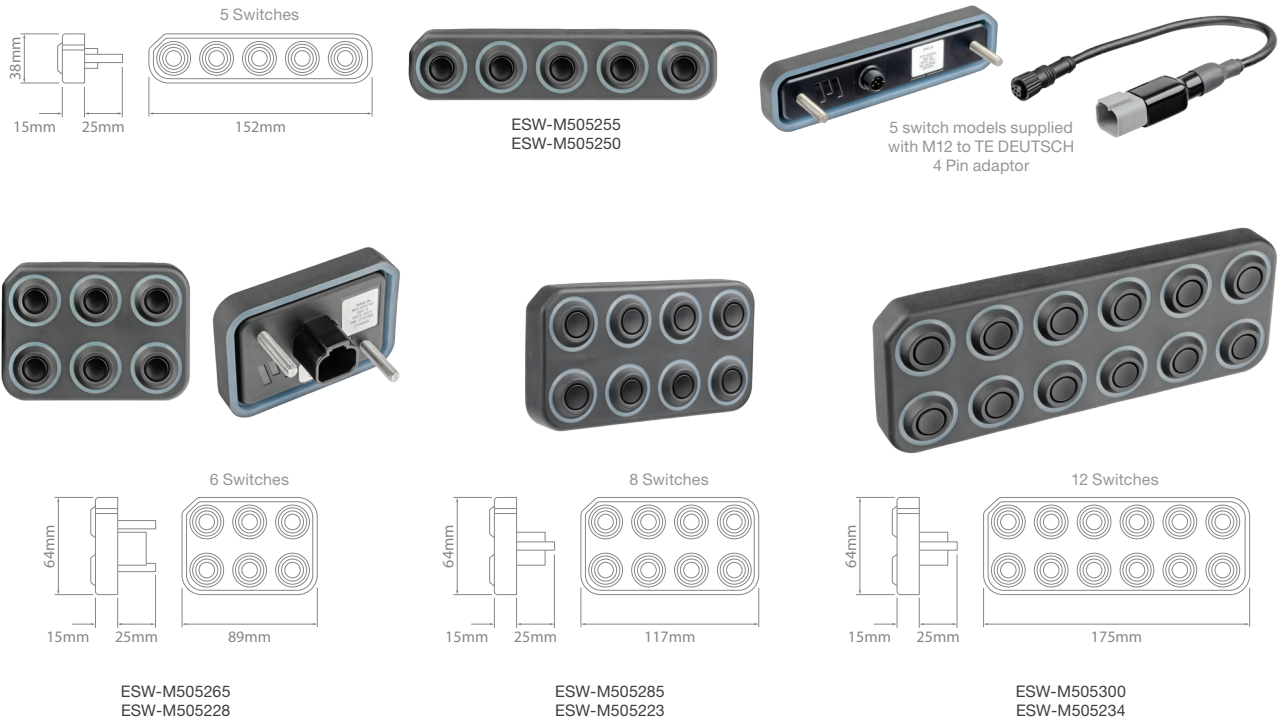


Download the Marlin Keypad app for Android or iOS, and connect via Bluetooth to the keypad.

The app sends the same CAN bus messages as a physical button press allowing full system control from a distance.

Download app from Google Play or Apple App Store





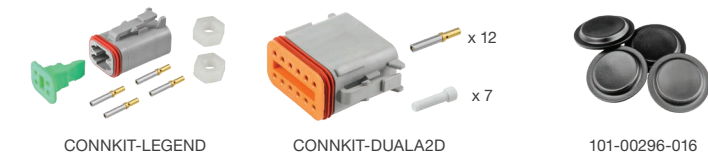
Legend Series Keypads NEW

	5 Switches	6 Switches	8 Switches	12 Switches
Standard	ESW-M505255	ESW-M505265	ESW-M505285	ESW-M505300
Bluetooth	ESW-M505250	ESW-M505228	ESW-M505223	ESW-M505234



Bidirectional CAN Bridge
(ESW-M505601 & ESW-M505650)
A two-channel CAN bus bridge for connecting two CAN bus networks

Laser Etched Inserts Available
For further information ask your local reseller or enquire online at ionnic.com



Legend Series Keypads – Accessories NEW

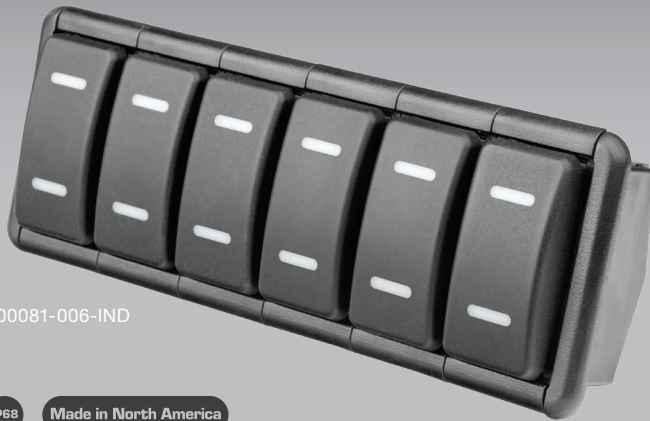
Part No.	Description
ESW-M505601	Bidirectional CAN bridge
ESW-M505650	Bidirectional CAN bridge - isolated
CONNKIT-LEGEND	Connector kit – Legend Series Keypads
CONNKIT-DUALA2D	Connector kit – Bidirectional CAN bridge (ESW-M505601 & ESW-M505650)
101-00296-016	Switch Insert. Sold individually



NEW



610-00081-004-IND



610-00081-006-IND

10V 32V IP68 Made in North America

- Designed for seamless integration into Class 1 DTD networks.
- Provide control and indication of outputs configured within the network database.
- Programmable switching and indication function.
- Rocker modules use optical interrupters – no contacts.
- Display LED pattern to indicate a variety of errors for easy diagnosis.
- TE DEUTSCH compatible connector.
- Wide range of accessories including actuator styles and CAM configurations available.
- Front face environmentally sealed – IP68.
- Made in North America.

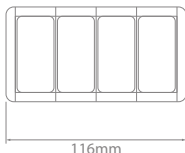
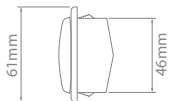
Voltage : 10–32V
 Max. Current Draw : 350 mA @ 12V
 CAN : SAE J1939
 Connector : DT Style – 6 Pin
 Construction : Polycarbonate
 Shock : MIL-STD-202 213-1
 Ingress Protection : Front Face Only IP68
 Approvals : CE
 Flame Test per Standard UL94V-0
 Operating Temperature : -40°C to 85°C



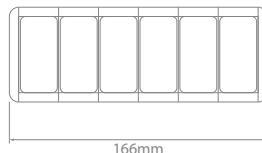
TE DEUTSCH compatible connector



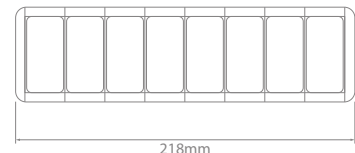
RGB status indicators for easy diagnosis



610-00081-004-IND



610-00081-006-IND



610-00081-008-IND

Smart Touch Rocker Switches **NEW**

Part No.	4 Switches 610-00081-004-IND	6 Switches 610-00081-006-IND	8 Switches 610-00081-008-IND
----------	---------------------------------	---------------------------------	---------------------------------

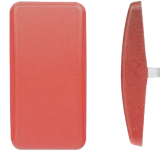
All switches supplied with standard black actuators with indicator windows & 2-position momentary CAMs to suit.



200-00154-000



200-00154-004



200-00154-005



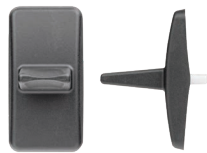
200-00154-006



200-00154-001



200-00163



200-00154-002



200-00154-007



Shown with 2 x 200-00154-001, 200-00163, 200-00154-002 & 200-00157 installed



200-00154-003



CAM Actuators



200-00155-000



200-00155-001



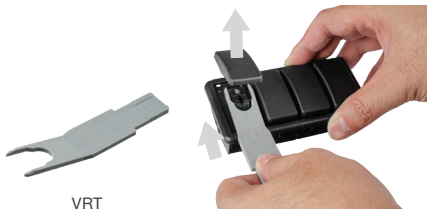
200-00155-002



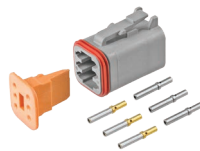
200-00155-003



200-00155-004



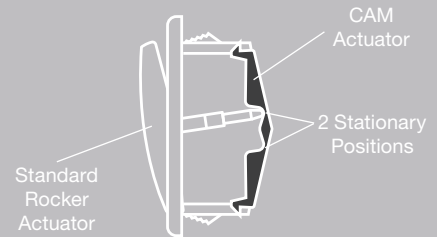
VRT



CONNKIT-TWISTER

CAM Actuators

The installation of CAM actuators at the rear of Smart Touch Rocker Switch housings can determine the switching functions, enabling the conversion of switches from momentary to stationary and from 1 position to 3 positions.



Smart Touch Rocker Switches – Actuators & Accessories NEW

Part No.	Description
200-00154-000	Standard Rocker – Black
200-00154-004	Standard Rocker – Green
200-00154-005	Standard Rocker – Red
200-00154-006	Standard Rocker – Grey
200-00154-001	Narrow Guarded Rocker – Black
200-00163	Finger Guard for Narrow Guarded Rocker
200-00154-002	Toggle Rocker – Black
200-00154-007	Standard Rocker with Indicator Windows – Black
200-00154-003	Stationary Blank – Black
200-00155-000	1-Position CAM Actuator. Momentary
200-00155-001	2-Position CAM Actuator. Momentary
200-00155-002	2-Position CAM Actuator. Stationary
200-00155-003	3-Position CAM Actuator. Stationary
200-00155-004	2-Position CAM Actuator. Stationary/Momentary
VRT	Actuator removal tool
CONNKIT-TWISTER	Connector Kit



Mining Equipment

Drilling Rigs

The mining industry demands reliability and serviceability to ensure equipment operates to capacity in harsh conditions.

Operator safety is paramount, and IONNIC Technical Systems' (ITS) ability to easily create complex safety interlocking makes this task possible.

Using next generation technology, ITS are at the forefront of industry performance in difficult environments.

- Fluid, pressure, temperature level indication
- Fluid flow control
- Lighting control
- Switch operation
- Safety interlocking
- Critical system monitoring
- Subsystem control and monitoring
- Interface with OEM engines
- Inbuilt diagnostics
- Machine angle monitoring
- Air conditioning climate control
- Multi-level password access



ent



Ultraview Touch Series - UV700



Supernode III



Ultraview Touch Series - UV1100



HD PDM



Smart Touch Panels



Climate Control Module



Motor Controller



I/O Modules