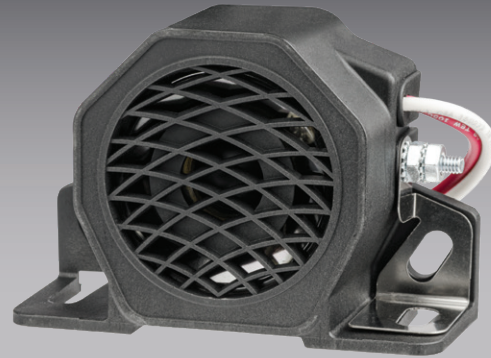


Tonal Reversing Alarms

- Alternating tone as used on scissor lifts or platforms.
- Environmentally sealed – IP64.
- Epoxy filled for maximum vibration resistance.
- Multi-voltage.
- 2-year warranty.

Dual Function



Voltage : 12-24V
 Housing : Glass Filled Nylon
 Cable Length : 160mm
 EMC : CE, C-Tick & 'e' marked
 Standards : Conforms to SAE J994 environmental
 Operating Temperature : -40°C to 85°C
 Ingress Protection : IP64



Dual Function

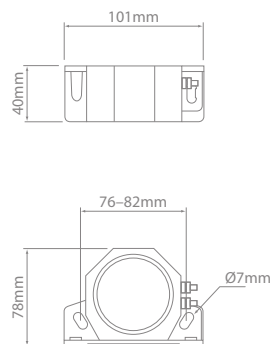
Dual Function warning alarms provide two types of audible warning in the one unit.

The first is a standard tonal reversing alarm sound, warning of an approaching / reversing vehicle.

bleep...bleep

The second is an alternating 'dual tone' sound that can be used to warn of dangers specific to certain machines or equipment eg; scissor lift actuation, rotating drive shafts, extending outriggers, etc.

bleep... bleep... bleep... bleep



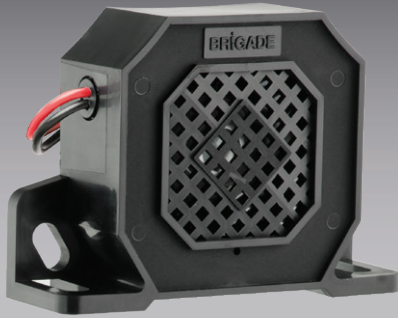
Dual Function Fixed Volume – Medium Duty

Part No.	Voltage	SPL - dB(A) @ 1m	Frequency - kHz	Current Draw (A)	Sounder Unit
DF532	12-24	102	0.7-2.8	0.8	Speaker



Alarms, Horns & Buzzers

Constant Tone Speaker



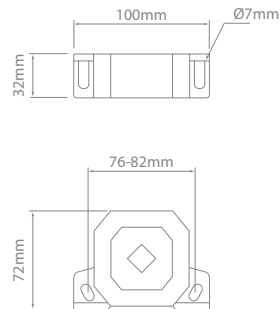
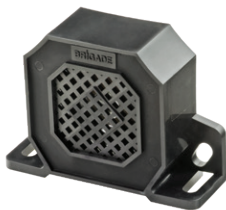
12V
24V

IP68

2Yrs

- Environmentally sealed – IP68.
- Epoxy filled for maximum vibration resistance.
- Can be steam & pressure cleaned.
- Multi-voltage.
- 2-year warranty.

Voltage : 12-24V
 Housing : AES
 Cable Length : 1m
 Vibration : 10G
 EMC : CE & 'e' marked
 Standards : Conforms to SAE J994 environmental
 Operating Temperature : -40°C to 85°C
 Ingress Protection : IP68



Constant Tone Speaker – Medium Duty

Part No.	Voltage	SPL - dB(A) @ 1m	Frequency - kHz	Current Draw (A)	Sounder Unit
CT470	12-24	102	1.25	0.3	Speaker

