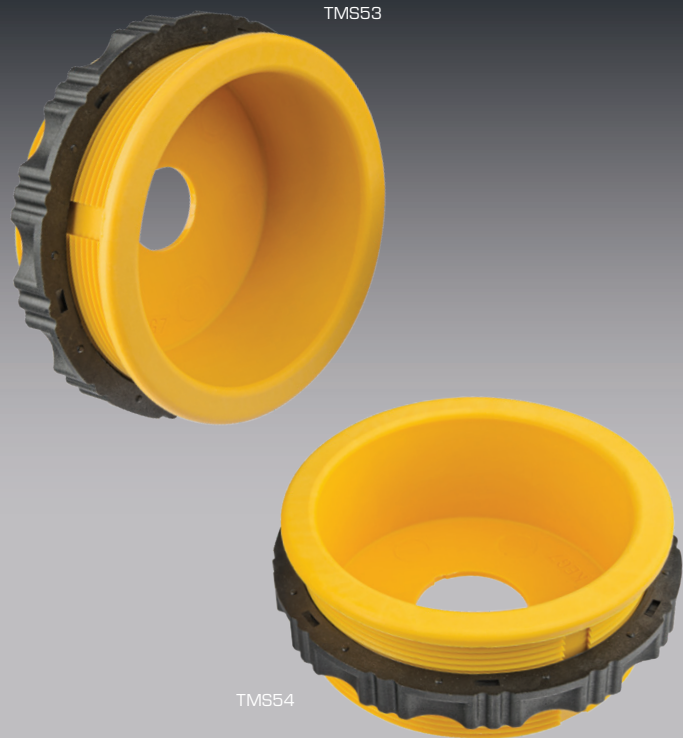


Emergency Stop

- Recessed panel mount for emergency stop switches.
- Protects switch and prevents accidental activation.
- Threaded nut fastener.
- Round E-Stop legends.



Recessed E-Stop Panel Mount

Material :
Max. Panel Thickness :

Plastic
26mm



TMS53



TMS52



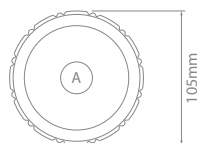
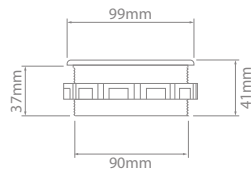
TMS54



TMS55



Shown with 22.5mm switch installed



For full range of TMS series E-Stop switches see Switches & Relays 2020 catalogue, page 53.

Recessed E-Stop Panel Mount

Part No.	A (mm)	Legend
TMS53	22.5	TMS52
TMS54	30.5	TMS55

