

# HMI

Smart Touch Rocker Switches

- Designed for Class 1 ES-Key distributed multiplex and V-MUX peer-to-peer networks.
- Provide control and indication of outputs configured within the network database.
- Programmable switching and indication function.
- Rocker modules use optical interrupters – no contacts.
- Display LED pattern to indicate a variety of errors for easy diagnosis.
- TE DEUTSCH compatible connector.
- Wide range of accessories including actuator styles and CAM configurations available.
- Front face environmentally sealed – IP68.
- Made in North America.



610-00081-004-BLK



610-00081-006-BLK

Voltage : 10–32V  
 Max. Current Draw : 350 mA @ 12V  
 CAN : SAE J1939, 250/500 Kbits/second  
 Connector : DT Style – 6 Pin  
 Construction : Polycarbonate  
 Shock : MIL-STD-202 213-1  
 Ingress Protection : Front Face Only IP68  
 Approvals : CE  
 Flame Test per Standard UL94V-0  
 Operating Temperature : -40°C to 85°C

10V  
32V

IP68

Made in North America



TE DEUTSCH compatible connector



RGB status indicators for easy diagnosis



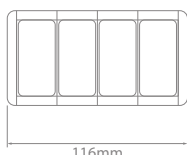
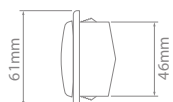
610-00081-004-BLK



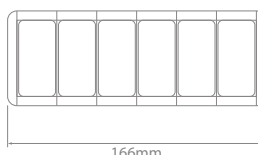
610-00081-006-BLK



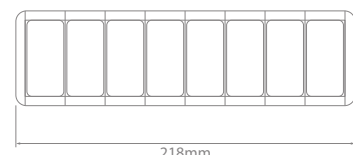
610-00081-008-BLK



116mm



166mm



218mm

## Smart Touch Rocker Switches

4 Switches  
 Part No. **610-00081-004-BLK**

6 Switches  
 Part No. **610-00081-006-BLK**

8 Switches  
 Part No. **610-00081-008-BLK**

All switches supplied with standard black actuators & 2 position momentary CAMs to suit.





200-00154-000



200-00154-004



200-00154-005



200-00154-006



200-00154-001



200-00163



200-00154-002



200-00154-007



Shown with 2 x 200-00154-001, 200-00163, 200-00154-002 & 200-00157 installed



200-00154-003



CAM Actuators



200-00155-000



200-00155-001



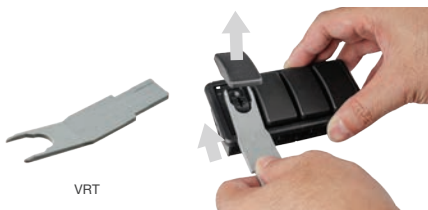
200-00155-002



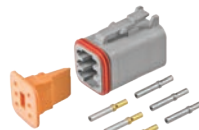
200-00155-003



200-00155-004



VRT



CONNKIT-TWISTER

### CAM Actuators

The installation of CAM actuators at the rear of Smart Touch Rocker Switch housings can determine the switching functions, enabling the conversion of switches from momentary to stationary and from 1 position to 3 positions.

Standard Rocker Actuator

CAM Actuator

2 Stationary Positions

## Smart Touch Rocker Switches – Actuators & Accessories

Part No.	Description
200-00154-000	Standard Rocker – Black
200-00154-004	Standard Rocker – Green
200-00154-005	Standard Rocker – Red
200-00154-006	Standard Rocker – Grey
200-00154-001	Narrow Guarded Rocker – Black
200-00163	Finger Guard for Narrow Guarded Rocker
200-00154-002	Toggle Rocker – Black
200-00154-007	Standard Rocker with Indicator Windows – Black
200-00154-003	Stationary Blank – Black
200-00155-000	1 Position CAM Actuator. Momentary
200-00155-001	2 Position CAM Actuator. Momentary
200-00155-002	2 Position CAM Actuator. Stationary
200-00155-003	3 Position CAM Actuator. Stationary
200-00155-004	2 Position CAM Actuator. Stationary/Momentary
VRT	Actuator removal tool
CONNKIT-TWISTER	Connection Kit