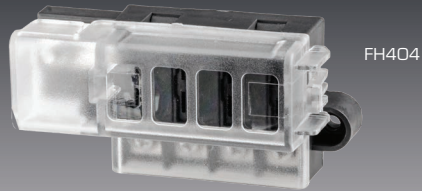


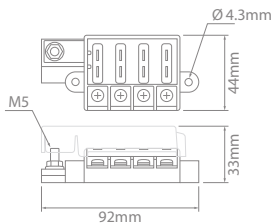
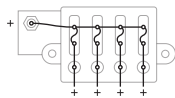
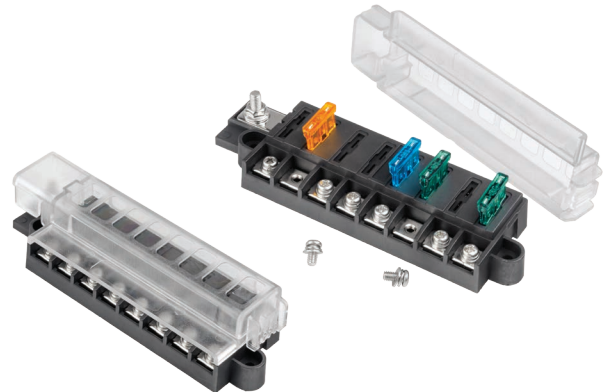
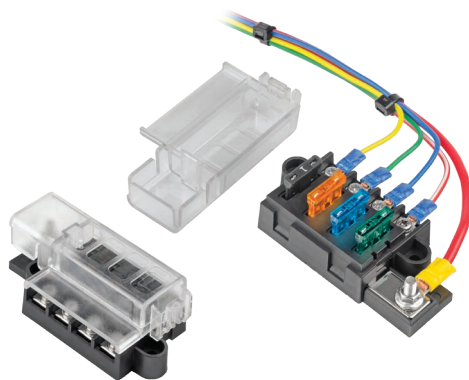
Circuit Protection

- 4 and 8 fuse models.
- Bussed input.
- Compact design.
- Suits ATO/ATS fuses.
- M4 screw terminals.
- Ideal for use with trucks, buses & RV's.



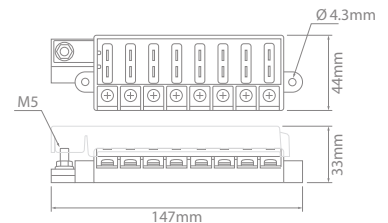
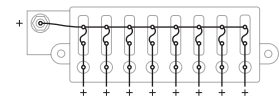
Blade Fuse Panels

Housing : Thermoplastic
 Cover : Polycarbonate
 Terminals : M4 Screw
 Studs : Stainless Steel
 Terminal Material : Nickel-plated Copper
 Operating Temperature : -25°C to 60°C



FH404

Seats 4 x ATO/ATS Fuses



FH408

Seats 8 x ATO/ATS Fuses



Blade Fuse Panels

Part No.	Seats	Max. Total Input Rating (A)	Max. Output Rating Per Terminal (A)
FH404	4 x ATO/ATS	100	40
FH408	8 x ATO/ATS	100	40

