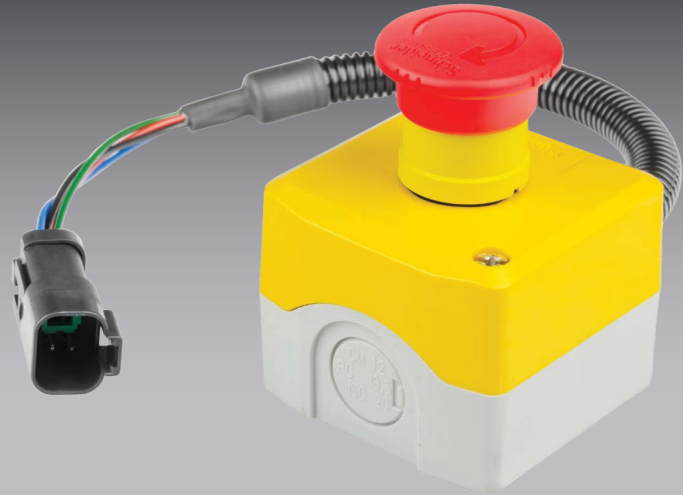


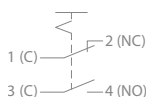
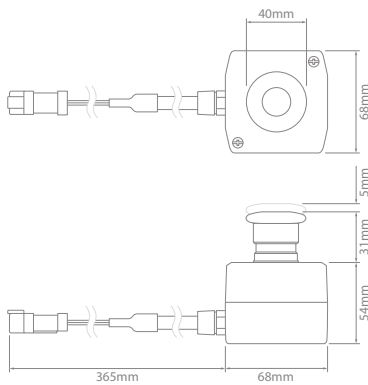
Emergency Stop Switches

- Convenient pre-wired E-Stop kit featuring a sealed harness and 'CAT Spec' TE DEUTSCH connector.
- 1 x NO & 1 x NC contact blocks.
- Latching 40mm mushroom button with turn-to-release.
- Utilises genuine TE DEUTSCH E005 'CAT-Spec' connectors for enhanced seal retention.
- Includes mating connector kit with wedgelock and contacts.
- Polycarbonate housing.
- Custom legends available.
- Environmentally sealed – IP65.
- Multi-voltage.



Pre-Wired

Voltage :	6–36V
Terminals :	Copper Zinc Alloy
Contacts :	Silver Alloy
Button :	Polymer
Body :	Polycarbonate
Connector :	Thermoplastic
Ingress Protection :	IP65
Operating Temperature :	-25°C to 70°C



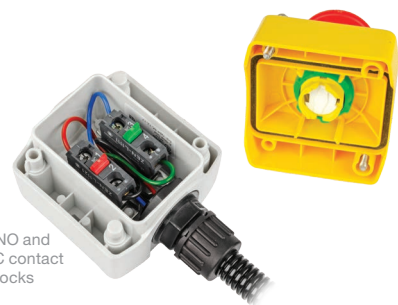
Genuine TE DEUTSCH E005 'CAT-Spec' connectors for enhanced seal retention



Includes mating connector kit with wedgelock and contacts



1 x NO and 1 x NC contact blocks



Pre-Wired – Kit

Part No.	Description
TMS34	Complete E-Stop kit including mating connector kit

Kit Contents:
 1 x E-Stop with integrated TE DEUTSCH connector
 1 x Mating connector components, including housing, wedgelock & size 16 contacts to suit.

