

# Emergency Stop Switches



# Emergency Stop Switches



Heavy Duty 52



Standard Duty 54



Illuminated 57



Recessed 58



KISSLING 60



BA Series 61

# Emergency Stop



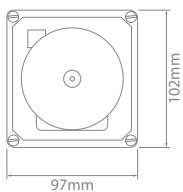
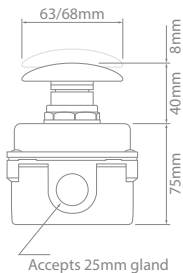
6V  
36V

IP65

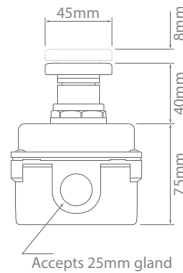
- Available in kit and component form.
- Solid metal housings.
- Multiple actuator types available including locking version.
- Multiple contact blocks available.
- Environmentally sealed – IP65.
- Multi-voltage.

CHS2

Voltage : 6–36V  
Contacts : Silver Alloy  
Button : Die-cast  
Housing : Die-cast  
Ingress Protection : IP65  
Operating Temperature : -17°C to 65°C



CHS2, CHS3, CHS4

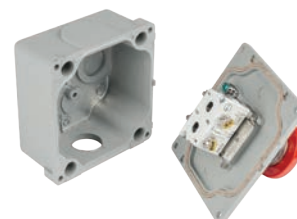
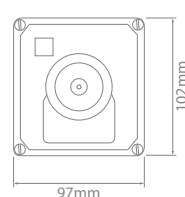
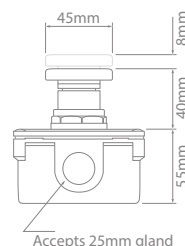
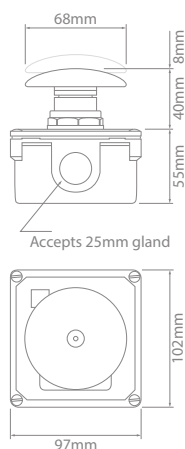


CHS6

## Heavy Duty – Kits – 75mm Enclosure

Part No.	Enclosure Type	Button Type	Legend	Contact Blocks
<b>CHS2</b>	75mm – TN11	68mm Lockable – T176P	“STOP PULL TO RESET” – D2179-53CP	N/O & N/C – T1P
<b>CHS3</b>	75mm – TN11	63mm Momentary – T172	“STOP” – TJ34	N/O & N/C – T1P
<b>CHS4</b>	75mm – TN11	68mm Push/Pull – T176M	“STOP PULL TO RESET” – D2179-53CP	N/O & N/C – T1P, N/O & N/O – T2P
<b>CHS6</b>	75mm – TN11	45mm Push/Pull – T129M	“STOP PULL TO RESET” – D2179-53CP	N/O & N/C – T1P

# Emergency Stop



CHS1, CHS7

CHS5

## Heavy Duty – Kits – 55mm Enclosure

Part No.	Enclosure Type	Button Type	Legend	Contact Blocks
<b>CHS1</b>	55mm – TN01	68mm Push/Pull – T176M	“STOP PULL TO RESET” – D2179-53CP	N/O & N/C – T1P
<b>CHS7</b> <span style="color: red;">NEW</span>	55mm – TN01	68mm Lockable – T176P	“STOP PULL TO RESET” – D2179-53CP	N/O & N/C – T1P
<b>CHS5</b>	55mm – TN01	45mm Push/Pull – T129M	“STOP PULL TO RESET” – D2179-53CP	N/O & N/C – T1P



TN01



TN11



T129M



T172



T1P



T2P



T3P



T176P



T176M



D2179-53CP



TJ34



220S25

## Heavy Duty – Components

Part No.	Description
<b>TN01</b>	Enclosure – Die-cast 55mm
<b>TN11</b>	Enclosure – Die-cast 75mm
<b>T129M</b>	Button – 45mm Push/Pull
<b>T172</b>	Button – 63mm Momentary
<b>T176P</b>	Button – 68mm Lockable Push/Pull
<b>T176M</b>	Button – 68mm Push/Pull
<b>T1P</b>	Contact block – N/O & N/C
<b>T2P</b>	Contact block – N/O & N/O
<b>T3P</b>	Contact block – N/C & N/C
<b>D2179-53CP</b>	Legend – “STOP PULL TO RESET”
<b>TJ34</b>	Legend – “STOP”
<b>220S25</b> <span style="color: red;">NEW</span>	Blanking plug – 25mm. Not a Eaton product

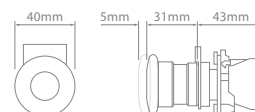


# Emergency Stop



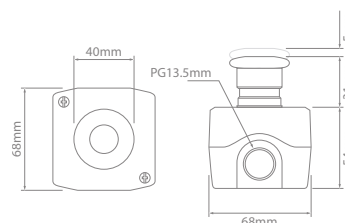
- Available in kit and component form.
- Metal & Polymer housings.
- Multiple actuator types available including locking version.
- Multiple contact blocks available.
- Custom legends available.
- Environmentally sealed – IP65.
- Multi-voltage.

Voltage : 6–36V  
 Contacts : Silver Alloy  
 Button : Polymer  
 Body : Die-cast  
 TMS-14 Polycarbonate  
 TMS-15  
 Ingress Protection : IP65 *excludes TMS39*  
 Operating Temperature : -25°C to 70°C



## Standard Duty – Kit – Panel Mount

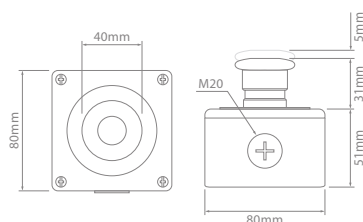
Part No.	Enclosure Type	Button Type	Legend	Contact Blocks
<b>TMS39</b>	NA (panel mount)	Latching – TMS12	Rectangle – TMS17	N/O & N/C – TMS10



## Standard Duty – Kits – Polymer

Part No.	Enclosure Type	Button Type	Legend	Contact Blocks
<b>TMS01</b>	Polymer – TMS15	Momentary – TMS11	Rectangle – TMS17	N/O & N/C – TMS10
<b>TMS02</b>	Polymer – TMS15	Latching – TMS12	Round – TMS18	N/O – ZEN-L1111, N/C – ZEN-L1121
<b>XALK178E</b> <span style="color: red;">NEW</span>	Polymer – TMS15	Latching – TMS12	—	N/O – ZEN-L1111, N/C – ZEN-L1121
<b>TMS03</b>	Polymer – TMS15	Push/Pull – TMS13	Rectangle – TMS17	N/O & N/C – TMS10
<b>TMS08</b>	Polymer – TMS15	Lockable – TMS21	Rectangle – TMS17	N/O & N/C – TMS10

# Emergency Stop



## Standard Duty – Kits – Metal

Part No.	Enclosure Type	Button Type	Legend	Contact Blocks
<b>TMS04</b>	Metal – TMS14	Momentary – TMS11	Round – TMS18	N/O & N/C – TMS10
<b>TMS05</b>	Metal – TMS14	Latching – TMS12	Round – TMS18	N/O & N/C – TMS10
<b>TMS06</b>	Metal – TMS14	Push/Pull – TMS13	Round – TMS18	N/O & N/C – TMS10
<b>TMS31</b>	Metal – TMS14	Latching – TMS12	Round – TMS18	N/C & N/C – TMS26
<b>TMS32</b>	Metal – TMS14	Push/Pull – TMS13	Round – TMS18	N/C & N/C – TMS26
<b>TMS33</b> <small>NEW</small>	Metal – TMS14	Latching – TMS12	Round – TMS18	N/O & N/C – TMS10, N/C – ZBE102



TMS14



TMS15



TMS11



TMS12



TMS13



TMS21

\*Not compatible with TMS-15 when used with T Series contact blocks



TMS27



TMS28



TMS29



TMS30

## Standard Duty – Components

Part No.	Description
<b>TMS14</b>	Enclosure – Metal. (T Series contact blocks only)
<b>TMS15</b>	Enclosure – Polymer
<b>TMS11</b>	Mushroom button – 40mm Momentary.
<b>TMS12</b>	Mushroom button – 40mm Latching, turn to release.
<b>TMS13</b>	Mushroom button – 40mm Push/Pull.
<b>TMS21</b>	Mushroom button – 40mm Lockable, unlock to release.
<b>TMS27*</b>	Booted button – 30mm Momentary Black
<b>TMS28*</b>	Booted button – 30mm Momentary Green
<b>TMS29*</b>	Booted button – 30mm Momentary Red
<b>TMS30*</b>	Booted button – 30mm Momentary Yellow

\*Not compatible with TMS-15 when used with T Series contact blocks.



# Emergency Stop



## Standard Duty – Components cont.

Part No.	Description
<b>TMS16</b>	Rectangle legend – “STOP”
<b>TMS17</b>	Rectangle legend – “EMERGENCY STOP”
<b>TMS18</b>	Round legend – “EMERGENCY STOP” – Yellow
<b>TMS23</b>	Contact block – T Series – Single – N/O. Mounts to switch
<b>TMS24</b>	Contact block – T Series – Single – N/C. Mounts to switch
<b>TMS10</b>	Contact block – T Series – Dual – N/O & N/C. Mounts to switch. Used in all standard kits
<b>TMS25</b>	Contact block – T Series – Dual – 2 x N/O. Mounts to switch
<b>TMS26</b>	Contact block – T Series – Dual – 2 x N/C. Mounts to switch
<b>ZBE101</b> <small>NEW</small>	Contact block – Single – N/O. Mount to T Series contact block
<b>ZBE102</b> <small>NEW</small>	Contact block – Single – N/C. Mount to T Series contact block
<b>ZEN-L1111</b>	Contact block – Z Series – Single – N/O. Mounts to enclosure base. (Not compatible with TMS14)
<b>ZEN-L1121</b>	Contact block – Z Series – Single – N/C. Mounts to enclosure base. (Not compatible with TMS14)
<b>220S20</b>	Blanking plug – 20mm. Not a Telemecanique product



# Emergency Stop

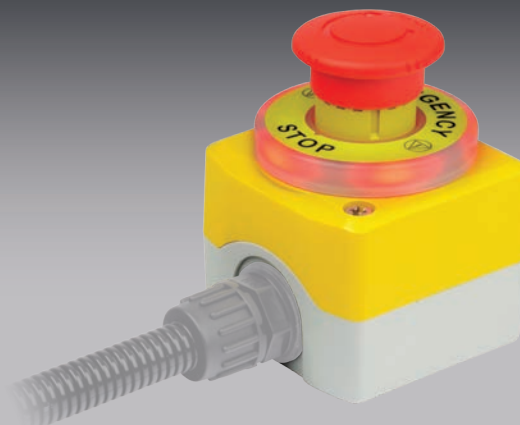
- Illuminated legend ensures easy identification of switch activation status.
- Legend illuminates in white when open, red when engaged.
- Available in kit and component form.
- Environmentally sealed – IP65.

**NEW**

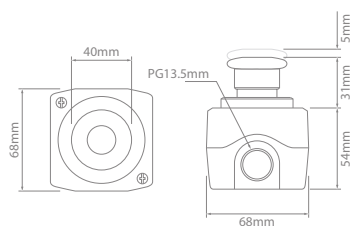
Illuminated

Voltage :  
Contacts :  
Button :  
Body :  
Ingress Protection :  
Operating Temperature :

24V  
Silver Alloy  
Polymer  
Polycarbonate  
IP65  
-25°C to 70°C



IP65



Legend illuminates in white when open, red when engaged



## Illuminated – Kit **NEW**

Part No.	Enclosure Type	Button Type	Legend	Contact Blocks
<b>TMS09</b>	Polymer – TMS20	Latching – TMS12	Round Illuminate – TMS19	N/O & N/C – TMS10, N/C – ZBE102



TMS20



TMS12



TMS19



TMS10



ZBE102

## Illuminated – Components **NEW**

Part No.	Description
<b>TMS20</b>	Enclosure – Polymer
<b>TMS12</b>	Mushroom button – 40mm Latching, turn to release
<b>TMS19</b>	Round legend – “EMERGENCY STOP” – White and Red illumination – 24 volt only
<b>TMS10</b>	Contact block – T Series – Dual – N/O & N/C
<b>ZBE102</b>	Contact block – Single – N/C. Mount to T Series contact block





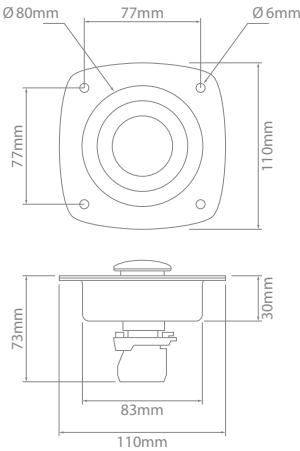
# Emergency Stop

Recessed



- Protect switches from accidental activation.
- Supplied with latching Telemecanique emergency stop switches.
- Telemecanique contact blocks.
- Round emergency stop legends.
- Each component also sold separately.
- Multi-voltage.

Voltage :	6–36V
Contacts :	Silver Alloy
Button :	Polymer
Enclosure :	Steel    Coated Carbon Steel
	Nylon    PA66
Operating Temperature :	–25°C to 70°C



## Recessed – Kits – Panel Mount – Steel NEW

Part No.	Bracket	Button Type	Legend	Contact Blocks
<b>TMS40</b>	Steel – TMS51	Latching – TMS12	Round – TMS52	N/O & N/C – TMS10
<b>TMS41</b>				N/O & N/O – TMS25

# Emergency Stop



## Recessed – Kit – Panel Mount – Nylon NEW

Part No.	Bracket	Button Type	Legend	Contact Blocks
<b>TMS44</b>	Nylon – TMS53	Latching – TMS12	Round – TMS52	N/O & N/C – TMS10
<b>TMS43</b>				N/O & N/O – TMS25



## Recessed – Components NEW

Part No.	Description	A (mm)
<b>TMS51</b>	Recessed panel mounting bracket – Steel. Rubber gasket and round legend	22.5
<b>TMS56</b>	Recessed panel mounting bracket – Steel. Rubber gasket and round legend	30.5
<b>TMS53</b>	Recessed panel mounting bracket – Nylon	22.5
<b>TMS54</b>	Recessed panel mounting bracket – Nylon	30.5
<b>TMS52</b>	Round legend – “EMERGENCY STOP” – Yellow	22.5
<b>TMS55</b>	Round legend – “EMERGENCY STOP” – Yellow	30.5
<b>TMS10</b>	Contact block – T Series – Dual – N/O & N/C	
<b>TMS25</b>	Contact block – T Series – Dual – 2 x N/O	



# Emergency Stop

KISSLING

**NEW**



TMS50

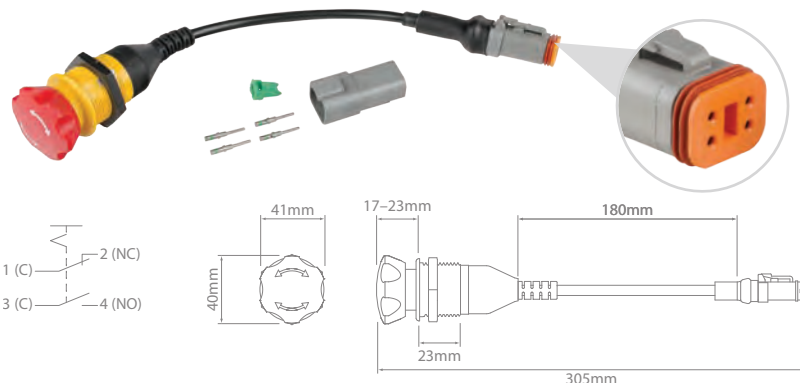
9V  
32V

IP67

IP  
6K9K

- Plug & play emergency stop switch.
- Multi-voltage.
- Available in N/O & N/C, and C/O models.
- TE DEUTSCH connector on fly lead.
- Incorporated strain relief on both ends of lead.
- Resistant to shock, vibration, dust and moisture.
- Environmentally sealed – IP67, IP6K9K, when installed to manufacturer's specifications.

Voltage :	9–32V
Max Current Rating :	10A Continuous
Terminals :	Copper Zinc Alloy
Contacts :	Silver Alloy
Switch :	Polyamide
Connector :	Thermoplastic
Cable Length :	TMS49 180mm
	TMS50 200mm
Thread Size :	M30 x 1.5
Shock :	50G
Vibration :	ISO 16750-3
Ingress Protection :	IP67, IP6K9K
Operating Temperature :	-40°C to 85°C

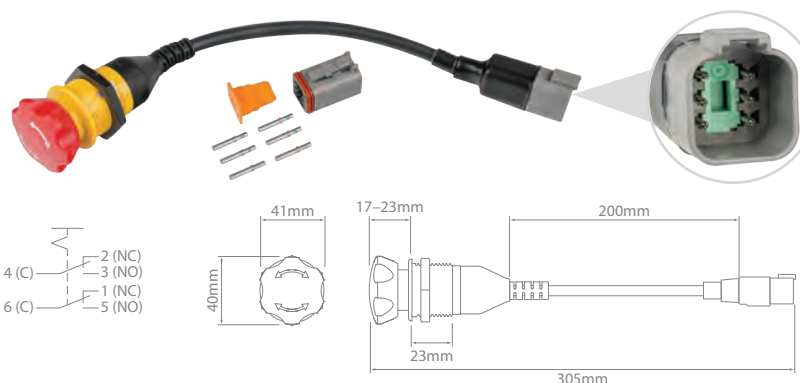


TMS49

TE DEUTSCH  
DT Series  
4 Pin Connectors



Compatible with TMS54 Recessed Panel Mount & TMS55 Emergency Stop Round Legend, see page 59



TMS50

TE DEUTSCH  
DT Series  
6 Pin Connectors



Mounting Dimensions

## KISSLING – Kits **NEW**

Part No.	Description	Button Type
<b>TMS49</b>	Single Pole. 1 x N/O, 1 x N/C	Latching (Turn to Release)
<b>TMS50</b>	Double Pole. 2 x Independent C/O	Latching (Turn to Release)

Kit Contents:  
1 x KISSLING E-Stop with integrated TE DEUTSCH connector  
1 x Mating connector components, including housing, wedgelock & size 16 green band contacts to suit.

# Emergency Stop

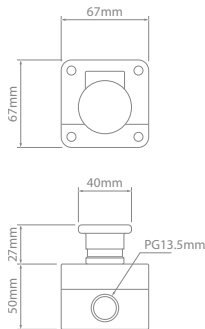
BA Series

- Multiple actuator types available including locking version.
- Supplied with 1 x N/O & 1 x N/C contact block.
- Supplied with emergency stop legend.
- Environmentally sealed – IP65.
- Multi-voltage.

Voltage : 6–36V  
 Current Rating : 10A  
 Contact Type : 1 x N/O & 1 x N/C  
 Contacts : Silver Alloy  
 Button : Polymer  
 Body : Polycarbonate  
 Ingress Protection : IP65  
 Operating Temperature : -25°C to 70°C



6V / 36V IP65



BA-J164, BA-J174



BA-J184, BA-J194

## BA Series – Kits

Part No.	Button Type	Contact Blocks
BA-J164	Push/Pull	Mounts to Lid
BA-J174	Latching (Turn to Release)	Mounts to Lid
BA-J184	Lockable	Mounts to Base
BA-J194	Momentary	Mounts to Base



BA-Z11



BA-Z21



220S20

## BA Series – Components

Part No.	Description	Suits
BA-Z11	Contact block – Single – N/O. Mounts to enclosure lid	BA-J164, BA-J174
BA-Z21	Contact block – Single – N/C. Mounts to enclosure lid	BA-J164, BA-J174
220S20	Blanking plug – 20mm	

