

## Horns & Buzzers

Disc & Scroll Horns

52

Constant Tone Speaker

54

Warning Buzzers

55

# Horns & Buzzers

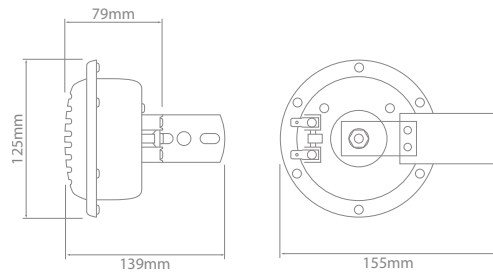
## Disc & Scroll Horns



- High & low frequencies.
- Twin terminals.
- Dual mounting bracket.
- 12 or 24V models for Disc Horns.
- Heavy Duty model ideal for truck, bus & mining applications.

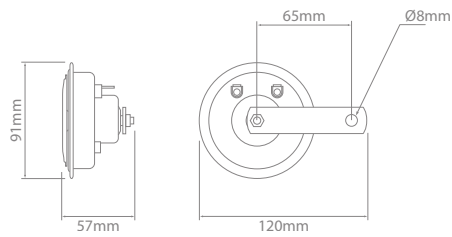
Terminal Size :

6.3mm



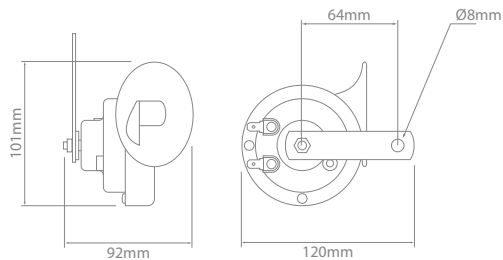
### Disc Horn – Heavy Duty

Part No.	Voltage	SPL – dB(A) @ 1m	Frequency – Hz
SY100	12	120	395
SY101	24	120	395



## Disc Horn

Part No.	Voltage	SPL - dB(A) @ 1m	Frequency - Hz	Frequency
<b>D2H12</b>	12	110	420	High
<b>D2H24</b>	24	110	420	High
<b>D2L12</b>	12	110	335	Low
<b>D2L24</b>	24	110	335	Low
<b>D212KIT</b>	12	Kit contains: 1 x D2H12 & 1 x D2L12		
<b>D224KIT</b>	24	Kit contains: 1 x D2H24 & 1 x D2L24		



## Scroll Horn

Part No.	Voltage	SPL - dB(A) @ 1m	Frequency - Hz	Frequency
<b>S2H12</b>	12	110	505	High
<b>S2L12</b>	12	110	425	Low



# Horns & Buzzers

Constant Tone Speaker

**NEW**

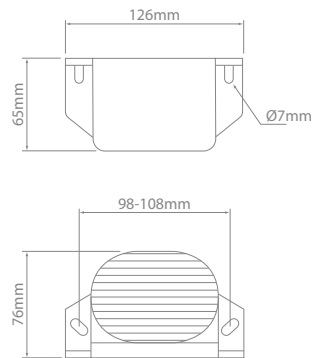


IP68 2Yrs 12V 24V



- Unique multi-frequency white sound.
- Eliminates noise nuisance complaints.
- Sound confined to the danger zone.
- Instantly locatable sound.
- Environmentally sealed – IP68.
- Epoxy filled for maximum vibration resistance.
- Can be steam & pressure cleaned.
- Multi-voltage.
- 2 year warranty.

Body : AES  
 Cable Length : 1m  
 Vibration : 10G  
 EMC : CE & 'e' marked  
 Standards : Conforms to SAE J994 environmental  
 Operating Temperature : -40°C to 85°C  
 Ingress Protection : IP68



**NEW** Constant Tone Speaker Medium Duty

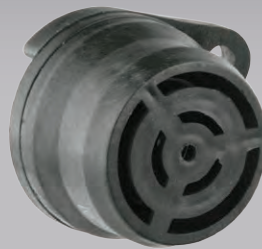
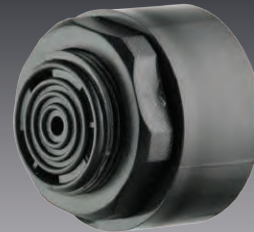
Part No.	Voltage	SPL – dB(A) @ 1m	Frequency – kHz	Current Draw (A)	Sounder Unit
CTBBS97	12–24	91	Muti	0.3	Speaker

# Horns & Buzzers

## Warning Buzzers

- 6–28V voltage range.
- Surface or panel mounts.
- Up to 85dB(A) output.
- Continuous or pulsed output from B657.
- B567 epoxy filled for vibration resistance.

B657



B12



B122

Terminal Size :	B12, B24	6.3mm
	B657	6.6mm
Cable Length :	B122	120mm

B12



B24

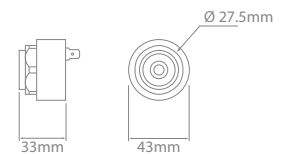
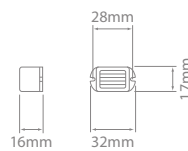
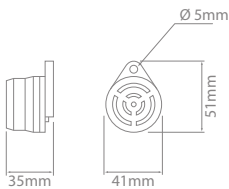


B122

6V  
28V



B657



## Warning Buzzers

Part No.	Voltage	SPL – dB(A) @ 1m	Frequency – kHz	Current Draw (A)	Sounder Unit
<b>B12</b>	12	85	350	0.01	Piezo
<b>B24</b>	24	85	350	0.02	Piezo
<b>B122</b>	9–15	75 @ 20cm	400	0.5	Mechanical
<b>B657</b>	6–28	85	2900	0.18	Piezo

